

Model		Sorter Stapler for F21 (Ricoh ST20, P.B. D962, Savin 7640 Sorter/Finisher, Nashua SR4965, infotec Sorter Stapler 91 65)					Volt/Hz	Date of Modification	Serial Number		
Modified Article		EPROM on Main Board									
Reason for Modification		Software program change for F22 system									
Draw No.	Old Parts No.		New Parts No.	Description	A.B.C.	Q'ty Used Old → New	Inter-changeability	Part needed for replacement by new part		Parts Catalog	
					Rank			Part No.	Description	Index No.	Page
	A4695100		A4695105	Main Board		1 - 1	x/o			80*	11 21
	A4695102			IC - HN27256G-25		1-0				1	21
			A4695103	IC - Sorter Stapler EPROM		o-1	x/o			1	21

Rank: A : Replace with new parts immediately. B : Replace with new parts at time of repair. C : Replace with new parts at time of overhaul.

Interchangeability:

(1) When old and new parts are not mutually interchangeable, use additional parts or an assembly part as indicated in "Parts needed for replacement by new part" to install the new part.

(2) The mark to the left of the slash indicates whether the old part can be used in the new machine, and the mark to the right indicates whether the new part can be used

Not interchangeable o = Interchangeable

DETAILS OF MODIFICATION

The F21 sorter stapler will be commonly used on the F22 system.
To install the F21 sorter stapler on the F22 copier, the software program of the EPROM on the main board has been changed as follows:

1. Jogger movement timing change
470ms/cycle \longrightarrow 365ms/cycle
2. Routine program addition for dual sorter stapler system



M. Konno, Manager
Reprographic Q. A. Section

MODEL NAME	V/Hz	DESTINATION	CODE	SERIAL NUMBER
P.B. D962	11 5/60	USA, Canada	A469-11	0060001
Savin 7640 Sorter/Finisher	11 5/60	USA, Canada	A469-15	3120060001
Nashua SR4965	11 5/60	Canada	A469-16	1220060001
Ricoh ST20	11 5/60	USA, Canada	A469-17	2440060001
Nashua SR4965	220,240/50	Europe, etc.	A469-25	1220070006
infotec Sorter Stapler9165	220,240/50	Europe	A469-26	383090XXXX
Ricoh ST20	220,240/50	Europe, etc.	A469-27	2440060342

Model		Sorter Stapler for F21 and F22 (Ricoh ST20)					Volt/Hz	Date of Modification	Serial Number	
Modified Article		Bins								
Reason for Modification		Bin color change Countermeasue for copy paper damage								
Draw No.	Old Parts No.	New Parts No.	Description	A.B.C.	Q'ty Used Old → New	Inter-change-ability	Part needed for replacement by new part		Parts Catalog	
				Rank			Part No.	Description	Index No.	Page
	A4693291	A4693293	Bin Exit Guide - LT		2 — 2	X/O			32	7
	A4693290	A4693292	Bin Exit Guide - A4		2 — 2	X/O			32	7
	A4694542	A4694552	Sorting Bin - LT		18 —18	X/O			26	7
	A4694539	A4694551	Sorting Bin - A4		18 —18	X/O			26	7
	A4694540	A4694560	Sorting Bin - 10th, 20th		2 — 2	X/O			31	7
	58873281	A4694515	Proof Tray		1 — 1	X/O			19	7

Rank: A : Replace with new parts immediately. B : Replace with new parts at time of repair. C : Replace with new parts at time of overhaul.

Interchangeability:

(1) When old and new parts are not mutually interchangeable, use additional parts or an assembly part as indicated in "Parts needed for replacement by new part" to install the new part.

(2) The mark to the left of the slash indicates whether the old part can be used in the new machine, and the mark to the right indicates whether the new part can be used in the old machine. x = Not interchangeable o = Interchangeable

DETAILS OF MODIFICATION

Details of modifications

- * The bin color has been changed from light gray to dark gray to change the appearance of this sorter/stapler.
- * The ribs around the right side of the bins have been changed from sharp to smooth.
This is to prevent the copy paper from being scratched.

MODEL NAME	V/Hz	DESTINATION	CODE	SERIAL NUMBER
Ricoh ST20	115/60	USA, Canada	A469-17	2440060001~
Ricoh ST20	220,240/50	Europe, etc.	A469-27	2440060342~

T. Ito, Manager
Copier Technical Support

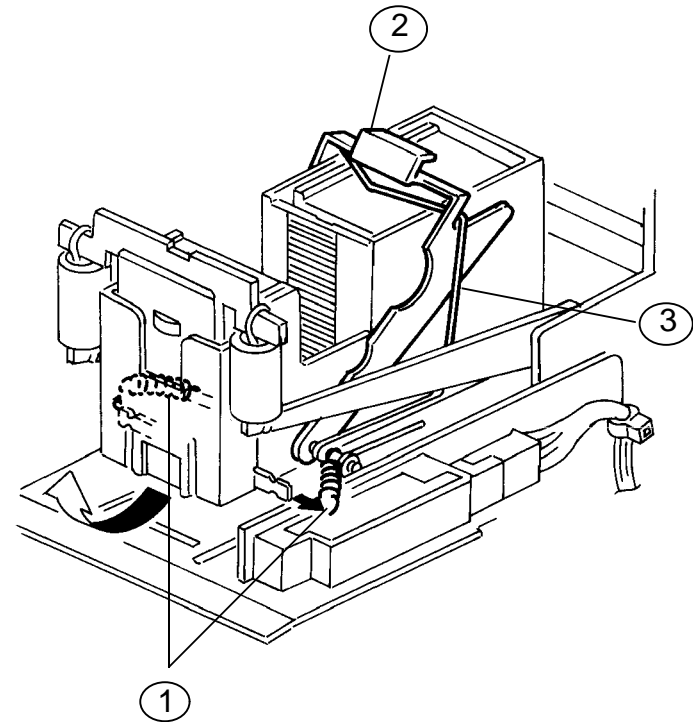
Model	Sorter Stapler for F21 and F22	Volt/Hz	Date of Modification	Serial Number
Modified Article	Stapler Cartridge Locking Parts			
Reason for Modification	As per field request			

As per field request, the spring stapler unit, the wire-cartridge holder and the clamp-cartridge holder have been registered as service parts.

Please add them to your parts catalog as follows:
Sorter Stapler (A469) in F21, F22

Page	Index No.	Part Number	Description	Q'ty	Illustration
15	*	#A4699502	Spring - Stapler Unit	2	1
	*	#A4699503	Clamp - Cartridge Holder	1	2
	*	#A4699504	Wire - Cartridge Holder	1	3

See illustration



T. Ito, Manager
Copier Technical Support

MODEL NAME	V/Hz	DESTINATION	CODE	SERIAL NUMBER
P.B. D962	115/60	USA, Canada	A469-11	Service parts only
Savin 7640 Sorter/Finisher	115/60	USA, Canada	A469-15	Service parts only
Nashua SR4965	115/60	Canada	A469-16	Service parts only
Ricoh ST20	115/60	USA, Canada	A469-17	Service parts only
Nashua SR4965	220,240/50	Europe, etc.	A469-25	Service parts only
infotec Sorter Stapler 9165	220,240/50	Europe	A469-26	Service parts only
Ricoh ST20	220,240/50	Europe, etc.	A469-27	Service parts only
Savin 9710 Sorter/Finisher	115/60	USA, Canada	A469-55	Service parts only

Model	Sorter Stapler for F21 and F22	Volt/Hz	Date of Modification	Serial Number
Modified Article	Rubber Seal - 1 x 6 x 10mm			
Reason for Modification	To improve adhesion			

The rubber seal used in the lower entrance guide plate is being replaced with a cushion. This cushion has the same function, but it adheres better to the guide plate surface.

Old P/N	New P/N	Description	Q'ty	Interchangeability	Index No.	Page
A4693113		Rubber Seal - 1 x 6 x 10mm	2 → 0		52	11
	→ 58873246	Cushion - Guide Plate	0 → 2	X/O	52	11

T. Ito, Manager
Copier Technical Support

MODEL NAME	V/Hz	DESTINATION	CODE	SERIAL NUMBER
P.B. D962	115/60	USA, Canada	A469-11	0110001~
Savin 7640 Sorter/Finisher	115/60	USA, Canada	A469-15	3120110001~
Nashua SR4965	115/60	Canada	A469-16	1220110001~
Ricoh ST20	115/60	USA, Canada	A469-17	2440110001~
Nashua SR4965	220,240/50	Europe, etc.	A469-25	1220110003~
infotec Sorter Stapler 9165	220,240/50	Europe	A469-26	3831100001~
Ricoh ST20	220,240/50	Europe, etc.	A469-27	2440110571~
Savin 9710 Sorter/Finisher	115/60	USA, Canada	A469-55	3820110001~

Model		Sorter/Stapler for F21 and F22					Volt/Hz	Date of Modification	Serial Number	
Modified Article		Noise filter (U. S. A. and Canada versions only)								
Reason for Modification		To increase margin against electrical noise								
Draw No.	Old Parts No.	New Parts No.	Description	A.B.C.	Q'ty Used Old → New	Inter-change-ability	Part needed for replacement by new part		Parts Catalog	
				Rank			Part No.	Description	Index No.	Page
		A4695442	Noise Filter Harness		o - 1				35	19
		A4695450	AC Intermediate Harness		o - 1				37	19
		04330080B	Philips Screw -M3 x 8		0 - 2				121	19
		16020950	Noise Filter		o - 1				133	19

Rank: A : Replace with new parts immediately. B : Replace with new parts at time of repair. C : Replace with new parts at time of overhaul.

Interchangeability:

- 1) When old and new parts are not mutually interchangeable, use additional parts or an assembly part as indicated in "Parts needed for replacement by new part" to install the new part.
- 2) The mark to the left of the slash indicates whether the old part can be used in the new machine, and the mark to the right indicates whether the new part can be used in the old machine. x = Not interchangeable o = Interchangeable

DETAILS OF MODIFICATION

To increase the margin against electrical noise, a noise filter has been installed on the U. S. A. and Canada version machines.

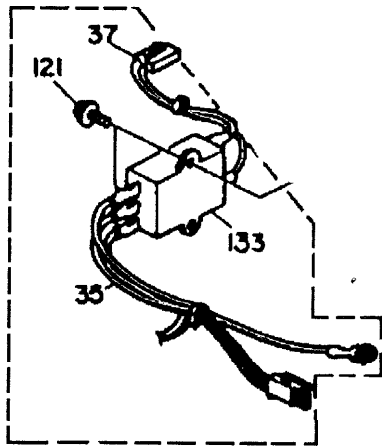


Fig 1. Illustration

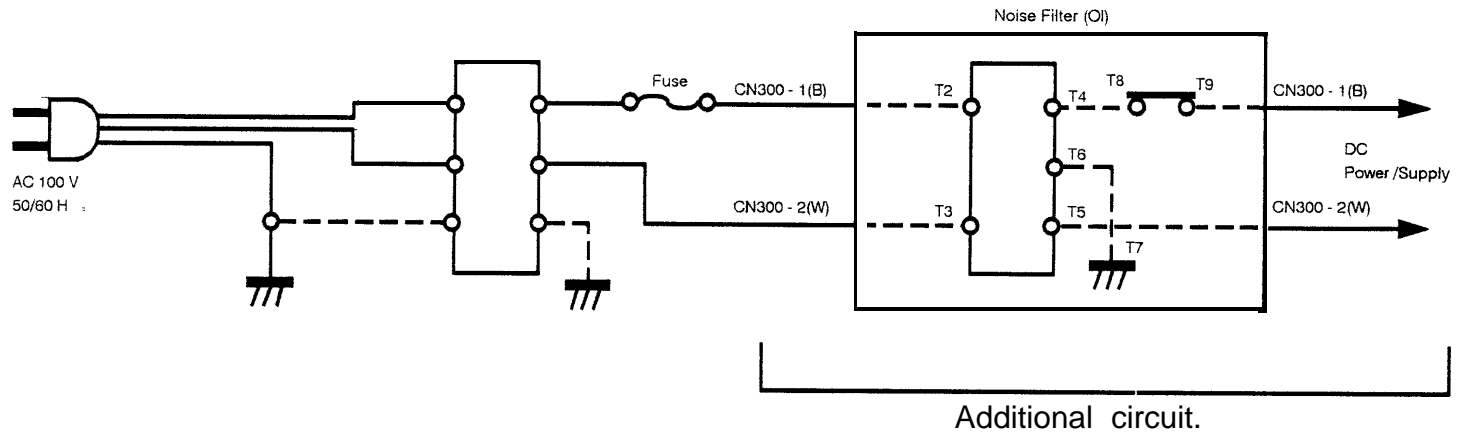


Fig.2 Circuit diagram

T. Ito, Manager
Copier Technical Support

MODEL NAME	V/Hz	DESTINATION	CODE	SERIAL NUMBER
P.B. D962	11 5/60	USA, Canada	A469-11	1050001
Savin 7640 Sorter/Finisher	11 5/60	USA, Canada	A469-15	3121050001
Nashua SR4965	115/60	Canada	A469-16	122107XXXX
Ricoh ST20	11 5/60	USA, Canada	A469-17	2441050001
Nashua SR4965	220, 240/50	Europe, etc.	A469-25	---. --- -
Infotec Sorter Stapler 9165	220, 240/50	Europe	A469-26	-----
Ricoh ST20	220, 240/50	Europe, etc.	A469-27	-----
Savin 9710 Sorter/Finisher	11 5/60	USA, Canada	A469-55	3821050001

Model		Sorter Stapler for F21 and F22 (NRG only)					Volt/Hz		Date of Modification		Serial Number	
Modified Article		Exterior Covers										
Reason for Modification		The color of the exterior covers has been changed at NRG's request.										
Draw No.	Old Parts No.	New Parts No.	Description	A.B.C.	Q'ty Used Old → New	Inter-changeability	Part needed for replacement by new part		Parts Catalog			
				Rank			Part No.	Description	Index No.	Page		
	A4691248	A4691250	Left Top Cover		1 → 1	X/X			17	7		
	A4691678	A4691680	Front Top Cover		1 → 1	x/x			10	7		
	A4691685	A4691688	Front Left Cover		1 → 1	X/X			6	7		
	A4691695	A4691699	Front Right Door		1 → 1	X/x			8	7		
	A4691704	A4691707	Right Cover		1 → 1	X/X			2	7		
	A4691713	A4691716	Rear Cover		1 → 1	x/x			12	7		
	A4692436	A4692440	Top Cover - LT		1 → 1	X/X			28	9		
	A4692437	A4692441	Top Cover - A4		1 → 1	X/X			28	9		
	A4691338	A4691341	Hand Grip		1 → 1	X/X			7	7		
	A4691291	A4691294	Left Cover		1 → 1	X/X			16	7		
	A4691264	A4691728	Rear Top Cover		1 → 1	X/X			9	7		

Rank: A : Replace with new parts immediately. B : Replace with new parts at time of repair. C : Replace with new parts at time of overhaul.

Interchangeability:

- 1) When old and new parts are not mutually interchangeable, use additional parts or an assembly part as indicated in "Parts needed for replacement by new part" to install the new part.
- 2) The mark to the left of the slash indicates whether the old part can be used in the new machine, and the mark to the right indicates whether the new part can be used in the old machine. x = Not interchangeable o = Interchangeable

Draw No.	Old Parts No.	New Parts No.	Description	A.B.C.	Q'ty Used Old → New	Inter- change- ability	Part needed for replacement by new part		Parts Catalog	
				Rank			Part No.	Description	Index No.	Page
	A4691389	A4691741	Rear Bin Support Cover		1 → 1	X/X			15	7
	A4691379	A4691742	Front Bin Support Cover		1 → 1	X/X			14	7
	A4691383	A4691391	Bottom Cover		1 → 1	X/X			1	7



T. Ito, Manager
Copier Technical Support

MODEL NAME	V/Hz	DESTINATION	CODE	SERIAL NUMBER
P.B. D962	11 5/60	USA, Canada	A469-11	
Savin 7640 Sorter/Finisher	11 5/60	USA, Canada	A469-15	
Nashua SR4965	11 5/60	Canada	A469-16	122108XXXX
Ricoh ST20	11 5/60	USA, Canada	A469-17	
Nashua SR4965	220,240/50	Europe, etc.	A469-25	1221060001
infotec Sorter Stapler 9165	220,240/50	Europe	A469-26	
Ricoh ST20	220,240/50	Europe, etc.	A469-27	
Savin 9710 Sorter/Finisher	11 5/60	USA, Canada	A469-55	

Model	Sorter stapler for F21 and F22	Volt/Hz	Date of Modification	Serial Number
Modified Article	Magnet catch			
Reason for Modification	Parts standardization			

Due to parts standardization, the following part has been changed. The interchangeability is O/O.

Page	Index	Old P/N	New P/N	Description
11	76	50540536	AG070004	Magnet Catch Ass'y
13	83			
19	4			

T. Ito, Manager
Copier Technical Support

MODEL NAME	V/Hz	DESTINATION	CODE	SERIAL NUMBER
P.B. D962	115/60	USA, Canada	A469-11	111XXXX
Savin 7640 Sorter/Finisher	115/60	USA, Canada	A469-15	3121100001
Nashua SR4965	115/60	Canada	A469-16	122111XXXX
Ricoh ST20	115/60	USA, Canada	A469-17	2441100001
Nashua SR4965	220,240/50	Europe, etc.	A469-25	1221100001
infotec Sorter Stapler 9165	220,240/50	Europe	A469-26	3831010001
Ricoh ST20	220,240/50	Europe, etc.	A469-27	2441100226
Savin 9710 Sorter/Finisher	115/60	USA, Canada	A469-55	3821100001

Model	Sorter Stapler for F21 and F22	Volt/Hz	Date of Modification	Serial Number
Modified Article	Jog Motor			
Reason for Modification	Due to vender change			

Due to vender change, part number of the following part has been changed.

Old P/N	New P/N	Description	Q'ty Used	Interchangeability	Parts Catalog	
					Index No.	Page
AX040027	AX040046	Jog Motor	1 → 1	O/O	16	17

T. Ito, Manager
Copier Technical Support

MODEL NAME	V/Hz	DESTINATION	CODE	SERIAL NUMBER
P.B. D962	115/60	USA, Canada	A469-11	/
Savin 7640 Sorter/Finisher	115/60	USA, Canada	A469-15	
Nashua SR4965	115/60	Canada	A469-16	
Ricoh ST20	115/60	USA, Canada	A469-17	
Nashua SR4965	220,240/50	Europe, etc.	A469-25	
infotec Sorter Stapler 9165	220,240/50	Europe	A469-26	
Ricoh ST20	220,240/50	Europe, etc.	A469-27	
Minolta SS205	115/60	USA	A469-51	From 1st Production
Toshiba MG2003	115/60	USA	A469-52	From 1st Production
Savin 9710 Sorter/Finisher	115/60	USA, Canada	A469-55	

Model		Sorter Stapler for F21 and F22					Volt/Hz	Date of Modification	Serial Number	
Modified Article		Stapler Component Parts								
Reason for Modification		As per field request								
Draw No.	Old Parts No.	New Parts No.	Description	Rank	Q'ty Used Old → New	Inter-change-ability	Part needed for replacement by new part		Parts Catalog	
							Part No.	Description	No.	Page
	—	A4699502	Spring - Stapler Unit		0 → 2				* 82	15
	—	A4699503	Clamp - Cartridge Holder		0 → 1				* 83	15
	—	A4699504	Wire - Cartridge Holder		0 → 1				* 84	15
	—	A4699505	Motor Gear		0 → 1				* 85	15
	—	A4699506	Gear 1		0 → 1				* 86	15
	—	A4699507	Gear 2		0 → 1				* 87	15
	—	A4699508	Key - Drive Gear		0 → 1				* 88	15
	—	A4699509	Drive Gear		0 → 1				* 89	15
	—	A4699510	Gear Holder		0 → 1				* 90	15
									* New index no.	

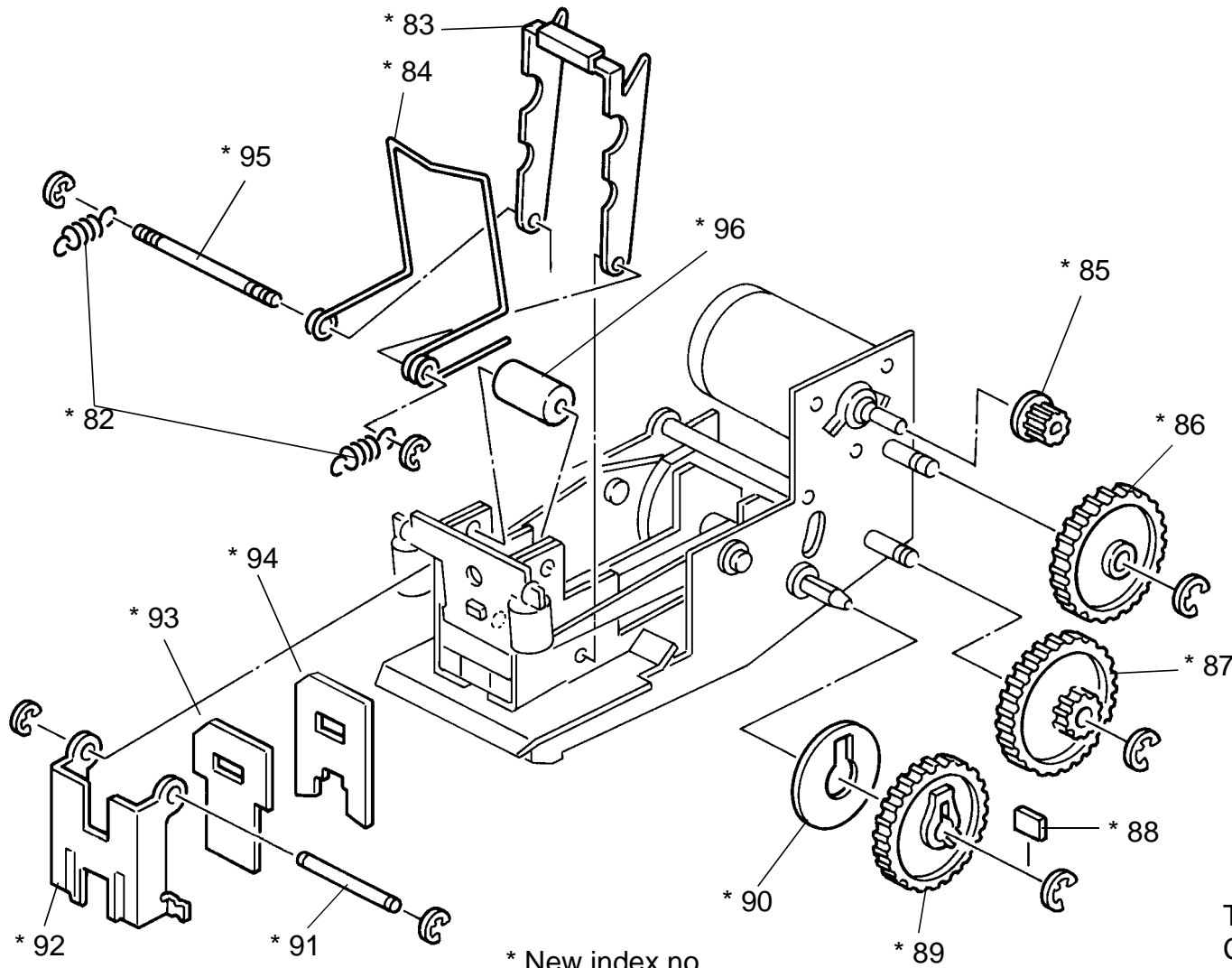
Rank: A : Replace with new parts immediately. B : Replace with new parts at time of repair. C : Replace with new parts at time of overhaul.

Interchangeability:

- (1) When old and new parts are not mutually interchangeable, use additional parts or an assembly part as indicated in "Parts needed for replacement by new part" to install the new part.
- (2) The mark to the left of the slash indicates whether the old part can be used in the new machine, and the mark to the right indicates whether the new part can be used in the old machine. x = Not interchangeable o = Interchangeable

DETAILS OF MODIFICATION

Add the illustration in this sheet to page 14 of your part catalog. For replacement and adjustment of these parts, refer to RTB - 21 (F21) or RTB - 16 (F22).



* New index no.

T. Ito, Manager
Copier Technical Support

MODEL NAME	V/Hz	DESTINATION	CODE	SERIAL NUMBER
P.B. D962	115/60	USA, Canada	A469-11	Service Parts Only
Savin 7640 Sorter/Finisher	115/60	USA, Canada	A469-15	Service Parts Only
Nashua SR4965	115/60	Canada	A469-16	Service Parts Only
Ricoh ST20	115/60	USA, Canada	A469-17	Service Parts Only
Nashua SR4965	220,240/50	Europe, etc.	A469-25	Service Parts Only
infotec Sorter Stapler 9165	220,240/50	Europe	A469-26	Service Parts Only
Ricoh ST20	220,240/50	Europe, etc.	A469-27	Service Parts Only
Minolta SS205	115/60	USA	A469-51	Service Parts Only
Toshiba MG - 2003	115/60	USA	A469-52	Service Parts Only
Savin 9710 Sorter/Finisher	115/60	USA, Canada	A469-55	Service Parts Only

Model	Sorter Stapler for F21/F22	Volt/Hz	Date of Modification	Serial Number
Modified Article	Rear Connector Bracket			
Reason for Modification	Due to vendor change			

Due to vendor change, the following part has been modified.

Old P/N	New P/N	Description	Q'ty Used	Inter-change-ability	Parts Catalog	
					Index No.	Page
A4691164	A4691166	Rear Connector Bracket	1 → 1	O/O	62	13

S. Hamano, Assistant General Manager
 Technical Support Department

MODEL NAME	V/Hz	DESTINATION	CODE	SERIAL NUMBER
P.B. D962	115/60	USA, Canada	A469-11	
Savin 7640 Sorter/Finisher	115/60	USA, Canada	A469-15	
Nashua SR4965	115/60	Canada	A469-16	
Ricoh ST20	115/60	USA, Canada	A469-17	
Nashua SR4965	220,240/50	Europe, etc.	A469-25	
infotec Sorter Stapler 9165	220,240/50	Europe	A469-26	
Ricoh ST20	220,240/50	Europe, etc.	A469-27	
Minolta SS205	115/60	USA	A469-51	
Toshiba MG - 2003	115/60	USA	A469-52	
Savin 9710 Sorter/Finisher	115/60	USA, Canada	A469-55	

Model	Sorter Stapler for F21 / F22	Volt/Hz	Date of Modification	Serial Number
Modified Article	LED Sensor Type - T			
Reason for Modification	Due to parts standardization			

Due to parts standardization with the other models, the following parts have been changed. Interchangeability O/O.

Old P/N	New P/N	Description	Q'ty Used	Parts Catalog	
				Index No.	Page
52055251	AW020041	LED Sensor Type - T	1	47 23	9 17
		Photointerruptor	1	47 23	9 17

S. Hamano, Assistant General Manager
 Technical Support Department

MODEL NAME	V/Hz	DESTINATION	CODE	SERIAL NUMBER
P.B. D962	115/60	USA, Canada	A469-11	
Savin 7640 Sorter/Finisher	115/60	USA, Canada	A469-15	
Nashua SR4965	115/60	Canada	A469-16	
Ricoh ST20	115/60	USA, Canada	A469-17	
Nashua SR4965	220,240/50	Europe, etc.	A469-25	
infotec Sorter Stapler 9165	220,240/50	Europe	A469-26	
Ricoh ST20	220,240/50	Europe, etc.	A469-27	
Minolta SS205	115/60	USA	A469-51	
Toshiba MG - 2003	115/60	USA	A469-52	
Savin 9710 Sorter/Finisher	115/60	USA, Canada	A469-55	

Model	Sorter Stapler for F21 / F22	Volt/Hz	Date of Modification	Serial Number
Modified Article	Leveling Foot Guide			
Reason for Modification	Due to parts standardization			

Old P/N	New P/N	Description	Q'ty Used	Inter-change-ability	Parts Catalog	
					Index No.	Page
54461086	AH013008	Leveling Foot Guide	2 → 2	O/O	50	19

S. Hamano, Assistant General Manager
 Technical Support Department

MODEL NAME	V/Hz	DESTINATION	CODE	SERIAL NUMBER
P.B. D962	115/60	USA, Canada	A469-11	
Savin 7640 Sorter/Finisher	115/60	USA, Canada	A469-15	
Nashua SR4965	115/60	Canada	A469-16	
Ricoh ST20	115/60	USA, Canada	A469-17	
Nashua SR4965	220,240/50	Europe, etc.	A469-25	
infotec Sorter Stapler 9165	220,240/50	Europe	A469-26	
Ricoh ST20	220,240/50	Europe, etc.	A469-27	
Minolta SS205	115/60	USA	A469-51	
Toshiba MG - 2003	115/60	USA	A469-52	
Savin 9710 Sorter/Finisher	115/60	USA, Canada	A469-55	